

ECOLOGY CELL™



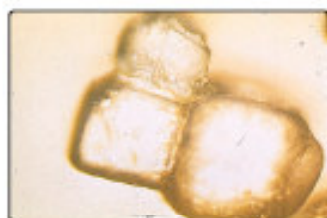
**YOUR BLEED WATER
AS CLEAN AS NATURE INTENDED**

THE TEAM GREEN™ APPROACH

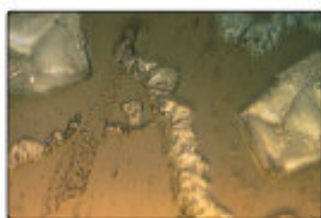
Ecology Cells™ are electron generators that are placed in your system. This simple installation normally takes just a few minutes. The Ecology Cells™ system contains copper tubes. These tubes are packed with a precisely mixed mineral compound. This mineral compound contains powered metals which once sealed inside the Ecology Cells™ create a small, very precise energy that flows through the water of your system (www.ecologycell.com).

HOW ECOLOGY CELLS™ CONTROL THE FOLLOWING:

Scale - As previously stated, the Ecology Cells™ induce a small, specific current into the water after being submerged. Crystals of scale are held together by electrical charges within the crystals. The Ecology Cells™ inhibit the ability of crystals to form, thus controlling scale buildup. In addition, as the energy penetrates existing scale, the scale is slowly dissolved back into the water flow. The specific current flow provided by the Ecology Cells™ ionizes dissolved solids (gives dissolved solids negative charges) in the system water. These like charges then repel one another throughout the system until the dissolved solids exit through the normal discharge (bleed or blowdown). We emphasize normal discharge because cycles of concentration with Ecology Cells™ are safely run as high or higher than with conventional chemical programs. This means less water usage for you. A simple chlorides/hardness ratio test can be run to show scale is being controlled*.



NO TREATMENT



5 MINUTES TREATMENT

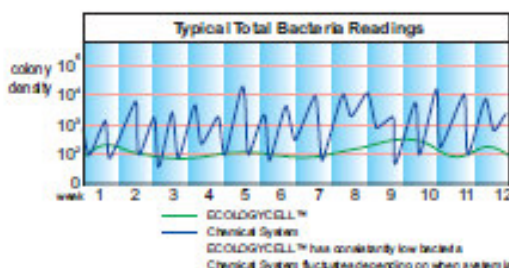
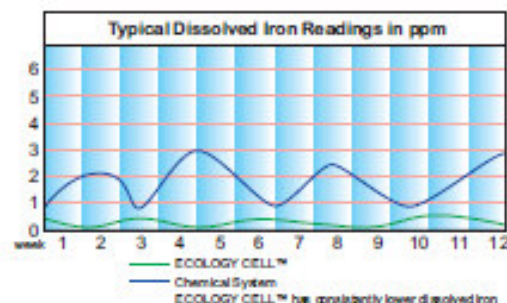


10 MINUTES TREATMENT



15 MINUTES TREATMENT

Corrosion - The primary cause of corrosion by water is the result of the dissolved oxygen in the water attacking the metal surfaces of your system. When the metal releases electrons to satisfy the oxygen, corrosion is the result. The Ecology Cells™ system, instead provides the electrons and the metal surfaces are protected. Simple dissolved metal tests can be run to accurately check for corrosion*.



Bacteria - The current induced into the water by the Ecology Cells™ kills single cell bacteria. This is the same principle as 120 volts moving sufficient current to kill a human. Simple bacteria culture tests can be run to be certain your systems bacteria levels are controlled.

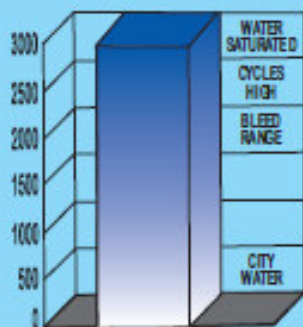


Algae - The Ecology Cells™ control algae in conjunction with:

1. Cooling Tower Balls (www.CoolingTowerBalls.com)
2. Block sunlight from distribution pans or any practical area
3. Discuss other options with your Team Green Representative

* Typical readings verified by independent university studies.

DO YOU OR YOUR COMPANY WANT THE LIABILITY OF DISCHARGING UNNEEDED HAZARDOUS CHEMICALS INTO THE ENVIRONMENT?



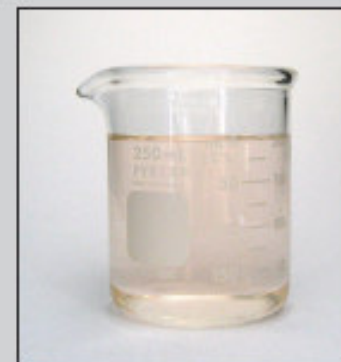
Conductivity Chart



Typical city make-up water



Typical bleed from cooling tower using TEAM GREEN™



Typical bleed from chemically treated cooling tower

Conductivity	300 Micromhos	1500 Micromhos	5	1200 Micromhos	4
Dissolved Solids	200 ppm	1000 ppm	5	800 ppm	4
pH	7.5	8.3	n/a*	8.3	n/a*
Dissolved Iron	0 ppm	0-1 ppm	n/a*	0-3 ppm+	n/a*
Chlorides	30 ppm	150 ppm	5	120 ppm	4
Hardness	100 ppm	500 ppm	5	350 ppm	3.5
Total Bacteria	n/a*	10 ²	n/a*	10 ⁴⁺	n/a*

* not applicable

BENEFITS OF ECOLOGY CELLS™

- Prevents Scaling
- Existing Scale Softens
- Metal Protected (through impressed current cathodic protection)
- Substantially Reduces Energy Costs
- Potential LEED Points
- No Capital Investment
- No Outside Energy Source Needed
- Reduces General Maintenance
- Helps Avoid Equipment Downtime
- Extends Equipment Life
- Eliminates Discharge Water Pollution Worries
- Quality Product Manufactured in U.S.A.
- 800 # For Technical Questions
- Product Liability Insurance

ECOLOGY CELLS™ vs. CHEMICALS

- Significantly Reduces Operating & Maintenance Costs
- Eliminates cost of:
 - \$ labor hours needed for chemical treatments
 - \$ chemicals used in descaling
 - \$ chemicals used to prevent scaling
 - \$ shipping of chemicals
 - \$ chemical feed equipment and maintenance
 - \$ safety training for handling chemicals
 - \$ chemical and chemical drum disposal
 - \$ equipment downtime due to descaling
 - \$ ordering, buying and storing of chemicals
- No Risk of Accidents from Moving Heavy Chemical Drums
- No Risk of Environmental or Worksite Pollution
- Fewer Tests to Run and Log
- No Need for Federal or Local Toxic Chemical Reporting Paperwork
- No Special Training Needed

Plus Hazardous Chemicals:

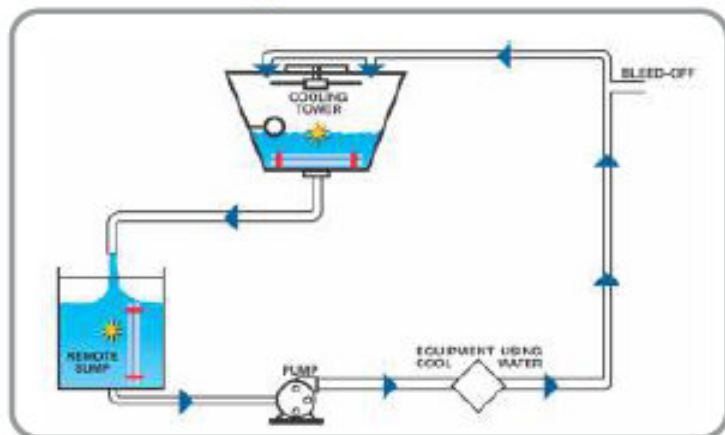
polyoxyethylene dimethyliminio ethylene dimethyliminio ethylene dichloride - amino trimethylene phosphonic acid - polyacrylic acid based polymer - potassium hydroxide - polyacrylic acid based co - polymers - sulfuric acid - zinc sulfate - amino - polymeleic acid - sodium tolytriozole - hydroxyethylene diphosphonic acid - sodium hydroxide - terpolymers - disodium cyanodithiomido carbonate - potassium N-methyldithio carbonate

Note: Chemically treated systems can contain all of the above as well as many other hazardous ingredients too numerous to list.

The Primary goals of your TEAM GREEN™ representative is to give you an effective, environmentally safe water treatment program. Your TEAM GREEN™ representative can do this without hazardous chemical additives. Your normal system discharge (bleed or blowdown) will contain only concentrated dissolved solids your water provider gave you. With TEAM GREEN™ discharge (bleed or blowdown) water is reusable.

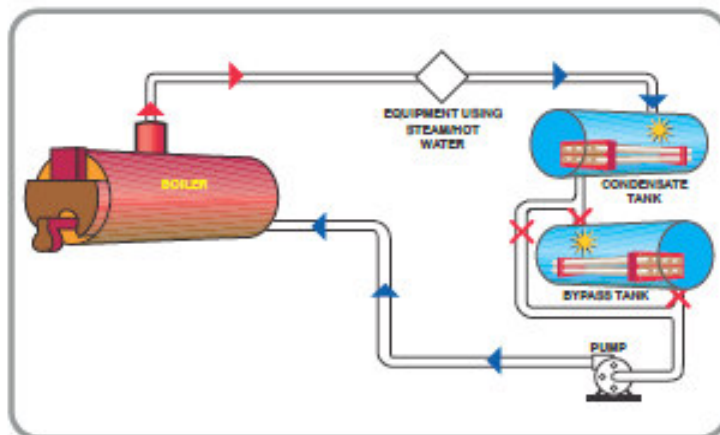
These diagrams illustrate how easy Ecology Cells™ are to try.

Cooling Tower Installation



* Ecology Cells™ are simply placed in the cooling tower or suspended in a remote sump if available.

Boiler Installation



* Ecology Cells™ are placed in the condensate tank or deaerator, or if these tanks are not available. In a bypass tank before the suction side of the pump feeding the boiler.

Trying Ecology Cells™ is as simple as 1-2-3.

1. Your TEAM GREEN™ representative surveys your system(s).
2. Your TEAM GREEN™ representative installs Ecology Cells™ with no capital investment or obligation.
3. You, our valued customer, enjoy the advantages of chemical free water treatment with service dedicated to your complete satisfaction.

Service

Having over 135 years combined experience in the water treatment business, the founders of our company know that good service and quick response makes for long term customers.

Your Team Green™ representative is a trained water treatment professional who uses Ecology Cells™ rather than dumping chemicals into our environment. Devoted to preventing and correcting issues in water systems, your Team Green™ representative will provide you with regular service calls and on-site testing. System Reviews with water test results and pertinent information is provided to your personnel on each visit.

The dollar for dollar cost for Team Green™ is typically comparable to chemical treatment; however, when all the benefits and savings of using Team Green™ are taken into consideration, Team Green™ always improves your bottom line by saving money, time, water, electricity and the environment.

THE COMPLETE ECOLOGY CELL™ PROGRAM WILL CONTROL SCALE, CORROSION, BACTERIA AND ALGAE.
IF EXCESSIVE SUSPENDED SOLIDS (DIRT, MUD, ETC.) ARE PRESENT IN YOUR SYSTEM,
FILTRATION MAY BE NEEDED IN COMBINATION WITH ECOLOGY CELLS™.

FOR MORE INFORMATION OR A QUOTE CALL:

REGIONAL DISTRIBUTOR

RSI

www.Team-Green.US

BRAD RAMSEY, VICE PRESIDENT (502) 376-0452
GREG DONLON, W. HEMISPHERE VP (502) 376-0454